

User's Manual

M-Series Sonars



Part Number: 205608-00

Revision: -

January 2016

©2016 Teledyne BlueView, All rights reserved. All product names are trademarks of their respective companies.

System Contents

Along with the M-Series Sonar, you will receive an accessory kit containing the following:

Sonar to Surface Cable
Cable Whip (4 ft.)
7ft Cat6 Ethernet Cable
60 W POE Box
Power Cable
Carrying Case

The Manual Packet includes:

Manual CD with:
<ul style="list-style-type: none">• Electronic copy of M-Series User's Manual• Electronic copy of M-Series Quickstart Guide
Printed copy of the M-Series Quickstart Guide
ProViewer CD

For SeaNet Sonars only:

SeaNet Specific Parts:
<ul style="list-style-type: none">• SeaNet to RJ45 Adapter• Additional 7ft Cat6 Ethernet Cable

For VDSL Sonars only:

VDSL Specific Parts:
<ul style="list-style-type: none">• VDSL G3 Top Side Converter Box with power cable• Sonar to Surface Cable with VDSL and Ethernet• VDSL Top Side Whip (RJ11)

Table of Contents

- System Contents 2
- Chapter 1: M-Series Sonar Overview..... 5
 - About the Sonar 5
- Chapter 2: Understanding an Imaging Sonar 6
 - What is an Imaging Sonar?..... 6
 - How do I interpret the Sonar images?..... 6
- Chapter 3: Bench Top Setup 7
 - Install the Software 7
 - Configure the PC 7
 - Firewall Software 8
 - Setup Equipment 8
- Chapter 4: Bench Top Setup VDSL10
 - Assemble the System for VDSL Connectivity10
 - Recommended Assembly Procedure10
 - Connecting with ProViewer 4.....12
 - Sound Speed Calibration13
 - Shutdown13
- Chapter 5: Sonar Installation14
 - Mount the Sonar14
 - Mounting Location14
 - Sonar Up-Down Orientation14
 - Sonar Angle.....15
- Chapter 6: Advanced Sonar Network Configuration.....16
 - Changing the Sonar IP Settings16
 - When You Forget the M-Series Sonar’s IP Address.....17
- Chapter 7: Maintenance18
 - Before Use18
 - After Use18
- Chapter 8: Troubleshooting.....19
 - Image Updates Seem Slow.....20
 - Still not working20
- Appendix A: Non-VDSL ROV Interface Setup21
- Appendix B: VDSL ROV Interface Setup22
- Appendix C: Hardware Trigger.....23
 - Introduction.....23

Disclaimers:

“Open Source License (GPLv2):

The firmware included in this product contains copyrighted software that is licensed under the GPL, specifically a modified Linux kernel. A copy of that license is at the following link; <https://www.gnu.org/licenses/gpl-2.0.html>. A hard copy is available upon request. You may obtain the complete Corresponding Source code from us for a period of three years after our last shipment of this product by contacting Teledyne BlueView Customer Support. This offer is valid to anyone in receipt of this information.”

Teledyne BlueView, has made every effort to ensure the accuracy and completeness of this document; however, because ongoing development efforts are made to continually improve the capabilities of our products, we cannot guarantee the accuracy of the contents of this document. We disclaim liability for errors, omissions, or future changes herein.

©2016 Teledyne BlueView. All rights reserved. No part of this publication may be copied, reproduced, or translated, without the prior written consent of Teledyne BlueView. No part of this publication may be stored or transmitted in any electronic form without the prior consent of Teledyne BlueView. Any unauthorized use is a violation of copyright laws.

Warnings:

Warning! This device should not be used as a navigational aid to prevent collision, grounding, boat damage, or personal injury.

Warning! This product contains lead, a chemical known to the state of California to cause cancer, birth defects and other reproductive harm. Handling and/or opening this unit may result in exposure to lead, in the form of solder.

Warning! Disassembly and repair of this electronic unit should only be performed by authorized service personnel. Any modification of the serial number or attempt to repair the original equipment or accessories by unauthorized individuals will void the warranty.

Warning! Changes or modifications to this unit not expressly approved by the party responsible for compliance may void the user’s authority to operate this equipment.

Warning! This equipment contains High Voltage electronics. Tampering with or using damaged equipment could lead to serious injury.

Warranty Information:

The sonar is backed by a standard 12-month parts and labor warranty policy. Seller’s terms and conditions of sale can be found at www.blueview.com

For more information on safety and/or maintenance issues please call Teledyne BlueView, at 425.492.7400.

Chapter 1: M-Series Sonar Overview

The M-Series sonar is a general purpose underwater imaging sonar designed for ROV, AUV, vessel mounted and stationary tripod integration. With its Ethernet interface and user-friendly software, the sonar system is designed to be just as easy-to-use as it is functional. This manual covers operations of all the M-Series sonar systems.

About the Sonar

The M-Series sonar provides streaming sonar imagery, making it easy to search and navigate in low and zero visibility water. Teledyne BlueView, has coupled high-performance imaging capability with a powerful software package creating one of the world's most versatile underwater imaging systems available today.

Advanced sonar technology, rugged design, and powerful software are just a few highlights of your sonar system. This manual explains imaging sonar interpretation and provides instructions on the installation and operation of your sonar system. For detailed information on using the sonar imaging software, please see the ProViewer Software Handbook found both on the software CD as well as under the software's help menu.

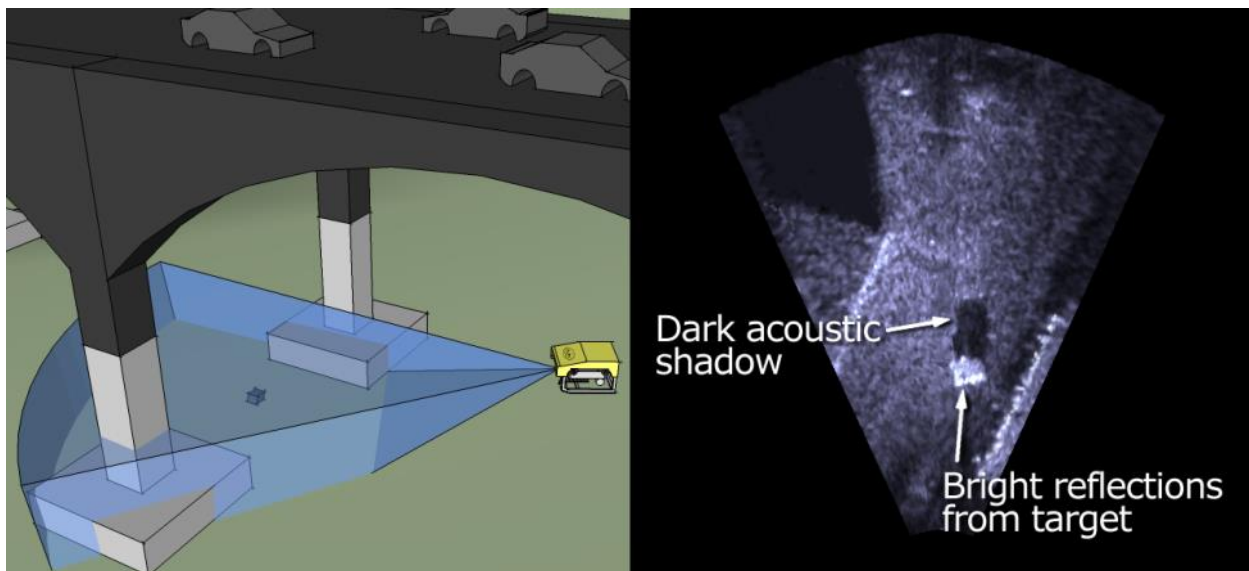
Chapter 2: Understanding an Imaging Sonar

What is an Imaging Sonar?

Many people are familiar with scanning type sonar, which employ mechanical rotation of a single acoustic beam over an imaging area. This works well when used on stationary platforms and/or when imaging static targets. They become much less useful when working from a moving platform and/or trying to image moving targets since any motion can cause errors in the final image. By comparison, Teledyne BlueView, imaging sonar are multi-beam sensors, which form many small acoustic beams at once. This allows them to work well from stationary and moving platforms. An imaging sonar can produce several high-quality images per second, making it possible to get movie-like imagery from the sonar.

How do I interpret the Sonar images?

Imagine a flashlight lying on a table and an object such as a coffee cup located in front of the flashlight. If you look down on this scene, you will see a bright area where light is reflecting off the face of the coffee cup. You will also see a dark shadow behind the coffee cup where light is unable to reach. The same idea can be applied to a Teledyne BlueView, imaging sonar by replacing the light source with a sound source. Bright areas on the sonar image are the result of objects reflecting sound, while dark areas are acoustic shadows resulting from an object blocking the sound. The two figures below provide an example of how a given scene would appear when viewed visually and with high-definition imaging sonar:



Chapter 3: Bench Top Setup

The following chapter contains step by step instructions for setting up your Teledyne BlueView, sonar.

Install the Software

Whether connected to an external PC or an onboard AUV controller, the ProViewer software is required to operate the M-Series Sonar. The following describes how to install the ProViewer 4 software on a user-supplied PC. For more information on ProViewer and integration, see the ProViewer Software Handbook found on the software CD, as well as under the software's help menu.

Note: Running other applications in conjunction with the ProViewer Software may affect performance of one or both of the applications.

- 1) Place the ProViewer CD-ROM in the CD-ROM drive. Installation will start automatically.

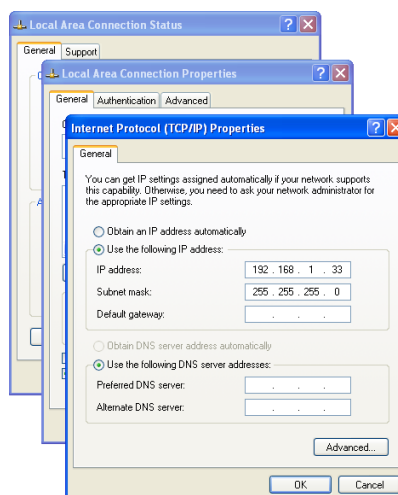
If the CD-ROM drive does not automatically run:

Select **Run** from the **Start** menu, and type `x:\setup` in the **Open** box (where x is the drive letter for the CD-ROM drive), then click **OK**.

- 2) The Welcome window opens. Click **Next**.
- 3) Follow the instructions on the screen to complete the installation

Configure the PC

The IP address on the user's PC will need to be set either to "Obtain an IP address automatically," or to a static IP: 192.168.1.x where x is any number besides 45 that doesn't conflict with the user's system:



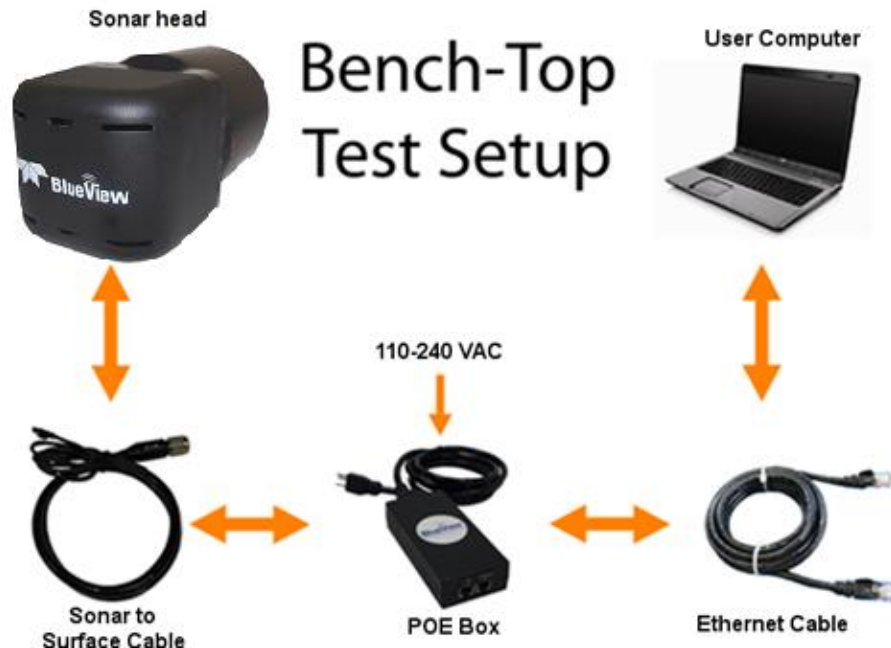
Firewall Software

ProViewer Software communicates with the Sonar Head using standard networking protocols. If your PC has firewall software, you may see a warning “**popup**” that asks permission to allow the ProViewer Software to connect to the Sonar. In that case, you may need to configure the firewall to allow communications between your Sonar and your PC using TCP and UDP on port 1149. Refer to your anti-virus software vendor or your computer tech support resources for assistance with your anti-virus software.

Setup Equipment

After installing ProViewer 4, the M-Series Sonar is ready for standalone operation. The only additional items required are the included Power Over Ethernet box (POE) and Sonar to Surface Cable. The diagram below illustrates the proper connections needed for the system to function properly.

Note: The sonar shown may not look like your sonar but still has the same setup.



1. Inspect all cable connector contacts to ensure no moisture, corrosion, or damage exists before assembling the system.
2. Connect the underwater connector on the Sonar to Surface Cable to the mating bulkhead connector on the rear of the sonar. Once connected, ensure that the connector is fully engaged and tightened.
3. Connect the RJ45 connector on the Sonar to Surface Cable to the “SONAR J1” port on the POE Junction Box.
4. Connect one end of the Standard Ethernet Cable to the “PC J2” port on the POE Box.
Note: The Sonar Head cabling is conveniently designed so that you can connect your POE Box to a PC with a **standard** Ethernet cable.
5. Connect the other end of the Standard Ethernet Cable to the Ethernet port on the User computer.

6. Plug the POE Box power cable into a standard 120 or 220 VAC wall outlet. The Sonar Head will power up and initialize itself in approximately 40 seconds. Correct operation requires that power be cycled from the AC side of the Junction Box.
Note: If you cycle the power off briefly, make sure you leave the power unplugged for at least 10 seconds.
7. Turn on your computer.

Chapter 4: Bench Top Setup VDSL

The following chapter contains step by step instructions for setting up your Teledyne BlueView, sonar using VDSL connection.

Assemble the System for VDSL Connectivity

The VDSL option enables communication over a single twisted pair. The figure below depicts how the components are interconnected. Your sonar and VDSL top side box may look different than the ones depicted below.

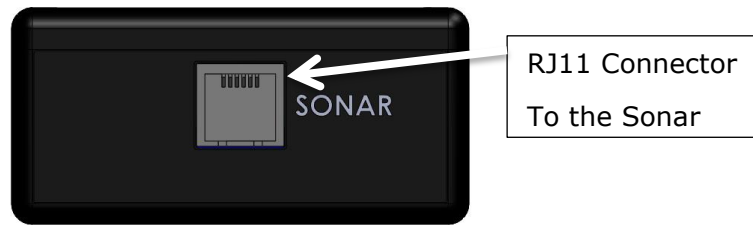
Note: The sonar shown may not look like your sonar but still has the same setup.



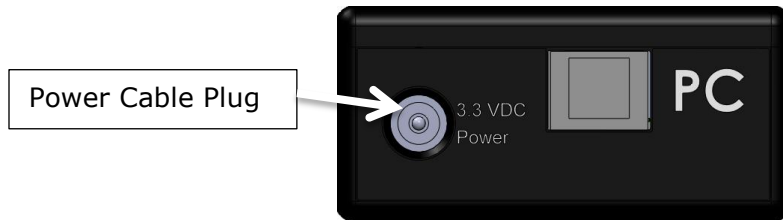
Recommended Assembly Procedure

1. Inspect all cable connector contacts to ensure no moisture, corrosion or damage exists before assembling the system.
2. Connect the underwater connector on the "25ft Sonar to Surface Test Cable" to the mating bulkhead connector on the rear of the sonar head. Make sure that all O-rings are present and in good shape before making the connection. Once connected, ensure that the connector is fully engaged and tightened. Connect the RJ45 connector on the Sonar to Surface Cable to the "SONAR J1" port on the POE Junction Box.

3. Connect the RJ11 connector on the Sonar to Surface Test Cable to the “SONAR” port on the VDSL Top Side box as shown below.



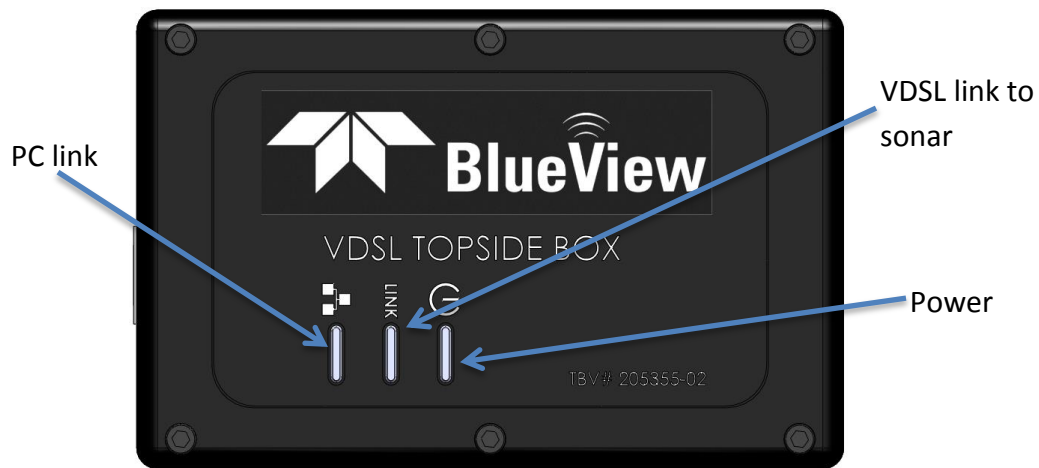
4. Plug the power cable to the VDSL Top Side box to a standard wall outlet.



5. Connect one end of the Standard Ethernet Cable to the “PC” port on the VDSL Top Side Box.
6. Connect the other end of the Standard Ethernet Cable to the Ethernet port on the User computer.
7. Plug in the POE box power cable and the VDSL power cable into a standard wall outlet. The sonar head will power up and initialize itself in approximately 60 seconds.

Note: When power cycling, correct operation requires that power be cycled from the AC side of the POE box. If you cycle the power off briefly, make sure you leave the power unplugged for at least 10 seconds before reconnecting the plug

8. The Power and VDSL link to sonar lights should illuminate a steady green color. This indicates a valid link between the top side box and the sonar exists. If the link light is orange this means that a connection exists between the sonar and the topside box, but that the unit has reduced the data throughput to 10BASE-T, or 10 Mbit/s. Possible reasons for this are the use of a non-Teledyne BlueView cable or cable length in excess of the rated specification. If the VDSL link to sonar light does not illuminate, there is no connection. Please verify all connections are properly secured and inspect the cable for damage.



9. Turn on your computer. The PC link light should illuminate a steady green color.

Note: If the computer is not connected, the light will not illuminate.

10. Start ProViewer, and click the “Connect” icon .

11. For Troubleshooting issues, please visit Chapter 8 “Troubleshooting”.

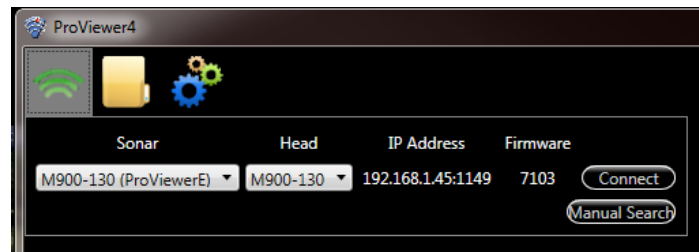
Connecting with ProViewer 4

Once the network settings are properly configured, open the ProViewer Software on the User Computer and click on the connect button, as shown below.

Note: If the sonar has just received power, it will take 30- 60 seconds to boot and be ready for a connection.

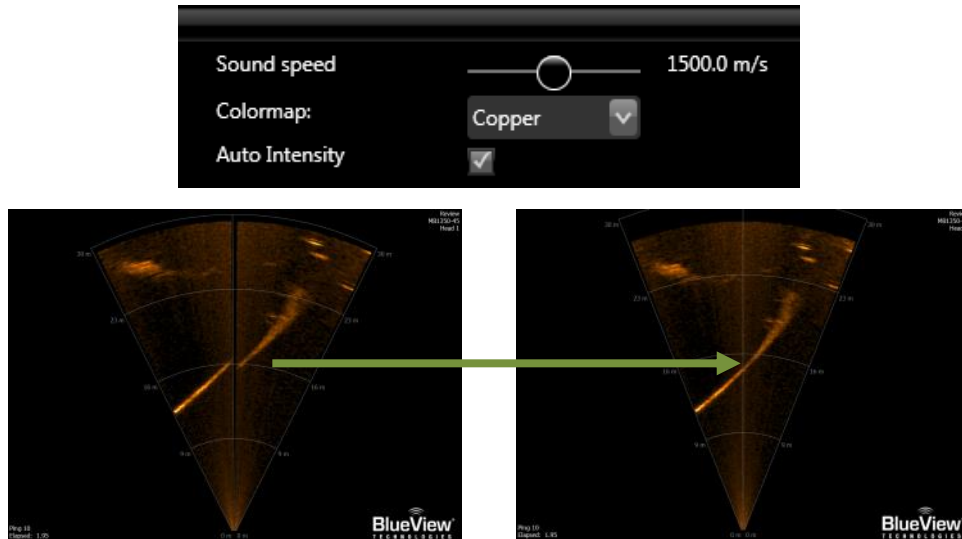


When the Connect button is pressed, the ProViewer software will automatically search for and list any sonars which are connected to the PC. If more than one sonar is present, or a sonar with multiple heads is present, ProViewer displays the available sonar heads to connect to in the Sonar and Head dropdown menu, respectively.



Sound Speed Calibration

If an image looks broken or misaligned, the most likely cause is an incorrect sound speed value. To access the Sound Speed slider from within ProViewer 4, right-click anywhere in the imagery window and adjust the slider bar to align the image.



Shutdown

To shut down the sonar, close the Sonar Window by clicking on the X icon in the top right-hand corner of the window, or select **Exit** from the **File** menu to close the entire program. To avoid data loss, be sure to close and save any sonar data files before removing the sonar power. It is now safe to power down the sonar or disconnect the sonar Ethernet cable from the computer.

When power cycling the sonar, be sure to allow at least 10 seconds of 'off time' before turning the sonar back on.

Chapter 5: Sonar Installation

Mount the Sonar

After installing your software and running your sonar for the first time, you're ready to put the sonar into the water.

In order to do this, the sonar needs a mounting structure to hold it securely in its underwater environment. This mount can either be one purchased from Teledyne BlueView, or a customer supplied mount. The preferred mounting method is a clamp type fixture around the cylindrical portion of the unit. For custom mounts, refer to the technical drawings provided in your kit.

Mounting Location

The sonar images like a camera out of the front of the nose cone. It should be mounted looking forward, preferably on the same pan-and-tilt as the ROV's main camera.



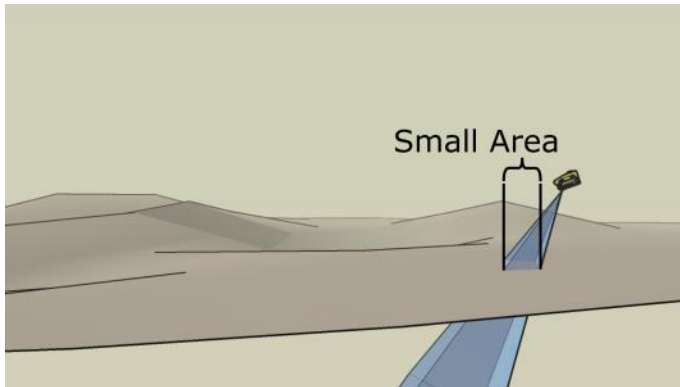
Sonar Up-Down Orientation

The Teledyne BlueView logo on the front of the sonar is used to determine the up-down orientation of the sonar (pictured below).

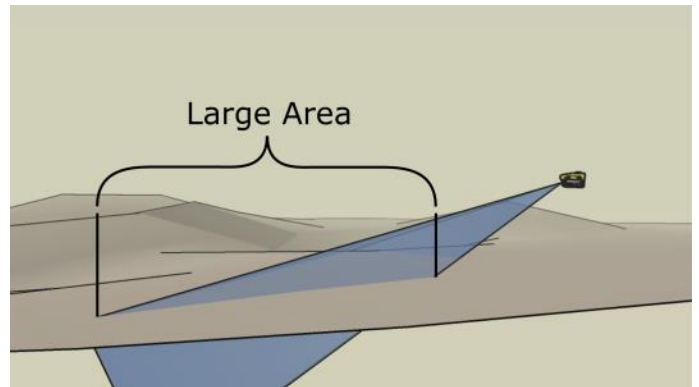


Sonar Angle

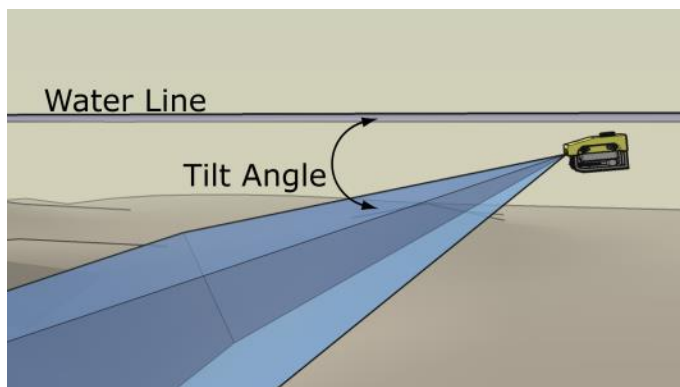
To achieve the optimal performance while imaging targets and/or the bottom at a given depth, the angle that the sonar is tilted down from the surface is important. This issue is demonstrated in the figures below. On the left, the sonar is tilted down at a steep angle that provides only a narrow field of view of the bottom. The sonar on the right-hand figure is set at a much shallower angle that provides both a better perspective on targets and a larger field-of-view of the bottom.



The sonar's steep tilt-angle in this figure produces imagery of a narrow strip of the bottom.



The sonar's shallow tilt-angle in this figure produces an image of the bottom over a broad area. In general, shallower tilt-angles, which give larger areas of bottom imaging, are preferred.



Recommended tilt angles.

Target Depth (ft)	0	10	20	30	40
Approx. Tilt Angle(Deg)	0	3	8	10	10

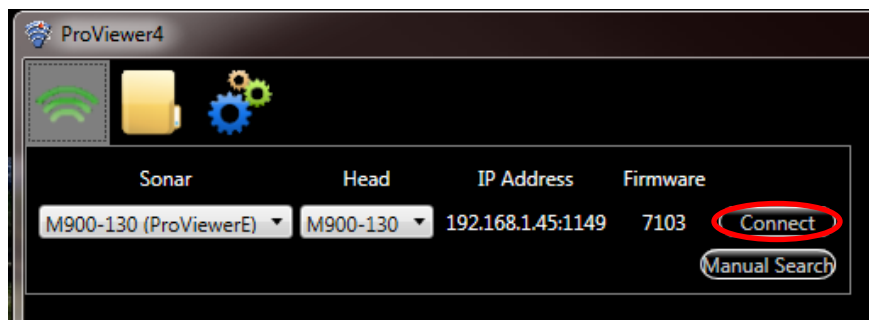
Chapter 6: Advanced Sonar Network Configuration


Changing the Sonar IP Settings

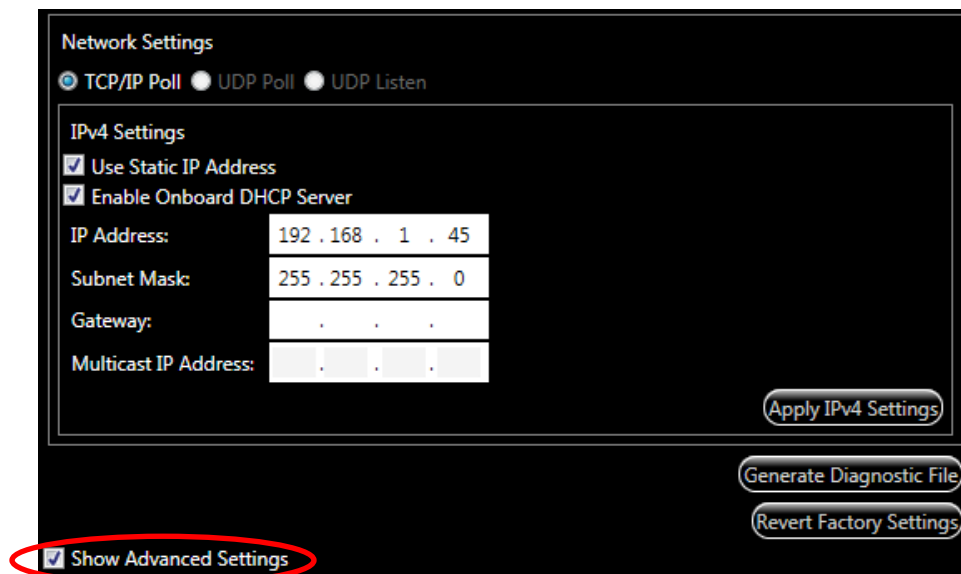
As communication with the M-Series sonar is handled through an Ethernet interface, the sonar requires an IP address to function properly. There are 3 ways to accomplish this – Static IP, DHCP server, or DHCP host – but the system is shipped from the factory with a Static IP address of 192.168.1.45 and a DHCP server enabled. These settings, however, can be changed using the ProViewer Software.

Note: The ability to change IP settings is an advanced feature of the ProViewer software and is only recommended for users familiar with IP settings and network configurations. **Incorrect settings can result in the loss of communication with the sonar.**

1. With the M-Series sonar powered and connected, open the ProViewer 4 software and click the connect button.
2. In the window that comes up, select the M-Series sonar and click **Connect**.



3. Under Settings , choose the Sonar tab and select Show Advanced Settings. Under **Network Settings**, you can change the various network settings of the sonar.



4. If any changes are made, click **Apply IPv4 Settings** and power cycle the sonar.

Note: By factory default, the sonar provides DHCP service to the computer or network it is attached to. If your network has a DHCP server operating, you should disable the sonar DHCP server before connecting it to the new network.

Note: The sonar Ethernet wiring is designed to connect directly to a PC network card (i.e. it is wired as a crossover cable). You can connect your sonar to an 'auto sensing' network device with the same cable you use to attach to a PC.

When You Forget the M-Series Sonar's IP Address

To connect with the sonar, the M-Series Sonar's IP address must be compatible with the network or computer to which it is attached. If you mis-configure the sonar's network settings and are unable to connect to it, follow this procedure to re-establish communications with the sonar:

1. Connect the sonar communication cable directly to a Windows computer's network interface card.
2. As described above, open the Internet Protocol (TCP/IP) Properties window for the network interface card you plugged the sonar into.
3. Under the General tab, select '**Obtain an IP address automatically**'.
4. Under the Alternate Configuration tab, select '**Automatic private IP address**' and click OK.
5. Close the rest of the windows folders you opened.
6. Cycle the sonar power off (for at least 10 seconds), then turn the sonar back on.
7. After about 100 seconds, the Windows PC and the sonar should have negotiated a 'link local' IP address (in the range of 169.254/16).
8. Using the ProViewer software, connect normally and reconfigure the sonar's network settings to be compatible with its intended network.

Chapter 7: Maintenance

Before Use

1. Prior to the assembly of the components, ensure that all connector contacts are clean, dry and free of dirt and/or corrosion.
2. Inspect the sacrificial zinc anode on the rear bulkhead of the sonar head and replace if it appears that more than half of the anode has been lost to corrosion.
3. Inspect all cables and connectors for abrasion, cuts or cracks. Repair or replace as needed.
4. Inspect the anodized sonar shell and front/rear bulkheads for excessive corrosion. If there is any question as to usability with the extent of any corrosion, contact Teledyne BlueView.
5. Inspect the front and rear bulkhead joints of the sonar head to insure the flush mount housing screws are in place.

Note: These are not a field replaceable item and should never be removed except by factory trained personnel.

After Use

1. After use, rinse the sonar, the rear connector on the sonar, and the sonar cable with a solution of mild soap and fresh water. At this time, inspect all components for corrosion, wear or damage. This includes the sonar, connectors, cables, and anode. Replace any component showing corrosion or damage.
2. Clean the connectors on the sonar cable and the connector on the rear bulkhead of the sonar unit with alcohol.

Note: The connector on the rear bulkhead of the sonar unit is NOT a field replaceable item. If any damage is detected, please contact Teledyne BlueView, for an RMA number to return the sonar to the factory for replacement, repair, and re-test.

3. Apply 3M silicon spray lube or equivalent to the external mating surface of the sonar connector and the internal mating surface of the sonar cable connector. Do not grease.
4. Check that the anode is in place and it has not deteriorated. Replace as necessary. More than 50% should remain or the anode should be replaced. When replacing the anode, make sure the surface under the anode is bare and bright before the anode is installed to ensure good electrical contact. For a replacement anode, please contact Teledyne BlueView.

Chapter 8: Troubleshooting

Possible Cause	Solution
No Power	Confirm that the POE Box is plugged into a standard 120 or 220 VAC outlet and that the small green LED on the POE Box is illuminated. Check that the Sonar-to-Surface cable is plugged into the SONAR J1 port on the POE Box.
Improperly connected	In addition to the connections described above, verify that you have a good cable between the computer Ethernet port and the PC J2 port on the POE Box.
Bad State	Reset the sonar by removing the POE box AC power cord for 10 seconds. The sonar head takes ~ 40 seconds to reboot after power is re-applied.
Dirty connectors	Make sure that all connector pins are clean and corrosion free.
Improper Ethernet cable	The Sonar Head cabling is conveniently designed so that you can connect your POE Box to a PC with a standard Ethernet cable. However, when connecting your POE Box to a network hub, a crossover Ethernet cable is required unless your network hardware is capable of automatically handling crossed Ethernet cables.
PC networking software is confused	Restart the networking software. There are several ways to do this depending on your particular operating system: Open the windows network connection window and right click on the Ethernet connection. Select repair or disable then enable . You can also simply restart the computer or cycle the power on the sonar.
IP subnet masks don't match	Make sure the subnet mask is the same on both PC and sonar. For the factory default Class C network configuration, the subnet mask is 255.255.255.0. The 255 defines the network portion of the IP address. The 0 defines the device portion of the IP address.
IP network addresses don't match.	Make sure the IP network part of the IP address is the same on both the sonar and the computer. In the factory default case, this is the first 3 numbers in the IP address: 192.168.1.
IP network device addresses are the same.	The device part of the IP address must be different for every device on the network. In the factory default case, the sonar is set to 45 and the PC is set to 3. Do not use 255 as it is reserved for broadcast use.
PC ARP table is stale.	In the ProViewer Sonar Devices window, click the Add button and enter the IP address you think the sonar is set to respond to, then click OK . The sonar should respond within several seconds. Alternatively, the PC power can be cycled to refresh the ARP table.
Poor connection quality	Use an Ohmmeter to verify Tx and Rx line connectivity between the Ethernet connector that plugs into the PC and the connector that plugs into the Sonar Head. Refer to the ProViewer Sonar to Surface Cable Drawing in the Spec sheet for pin to pin connection information.

Image Updates Seem Slow

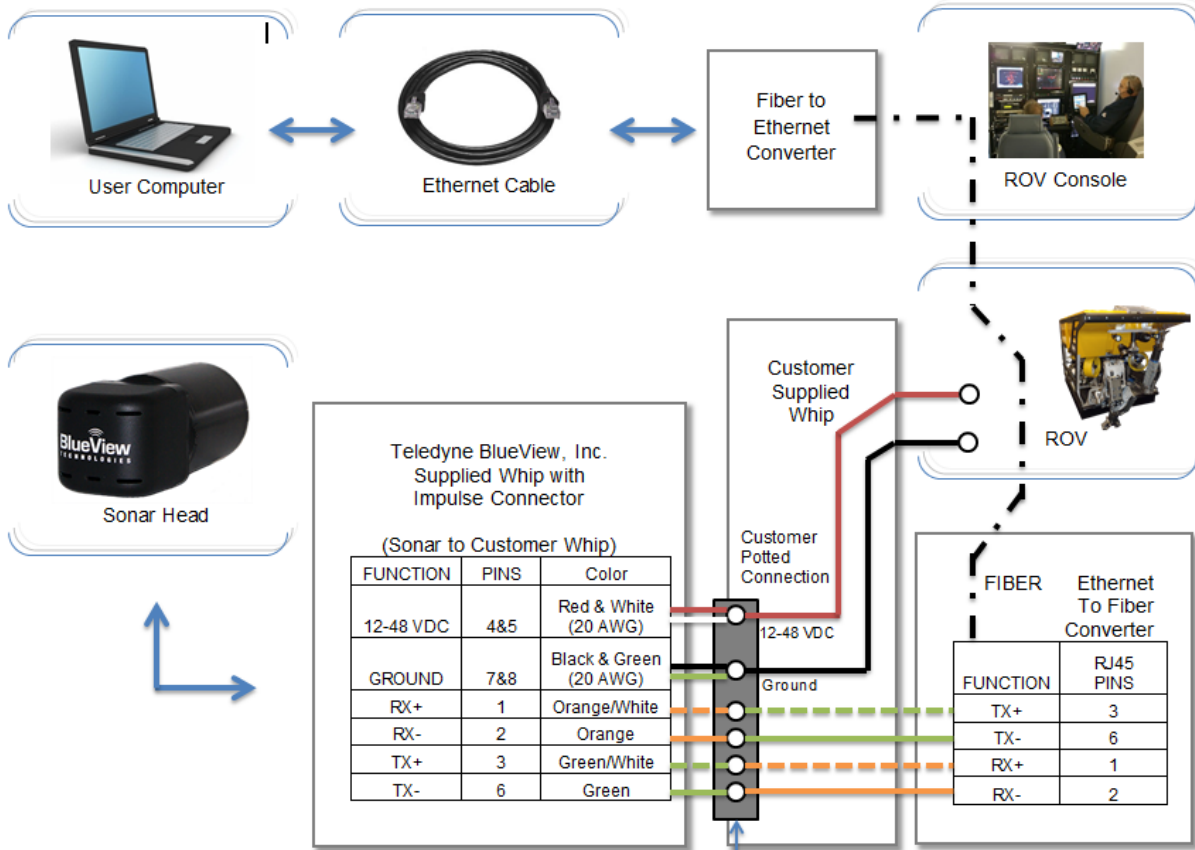
Possible Cause	Solution
Ethernet congestion	Shut down any other computers or services that are consuming the Ethernet network bandwidth
Range settings	When your sonar pings, it must wait for the echo to return from a distant object; long range settings directly cause slow updates. Reduce the Range Stop distance to increase the update rate.
GUI window size	The larger the displayed sonar image, the longer it takes for the ProViewer software to construct the image. To increase the image display update rate, decrease the size of the sonar image display window by grabbing one of sides or corner of the GUI and dragging it towards the center of the GUI window.

Still not working

Please contact us:
Teledyne BlueView, Customer Support
Website: www.blueview.com
Email: SWA_Support@teledyne.com
Phone Number: +1.425.492.7400
Hours of operation: 8am – 5pm PST Mon through Fri

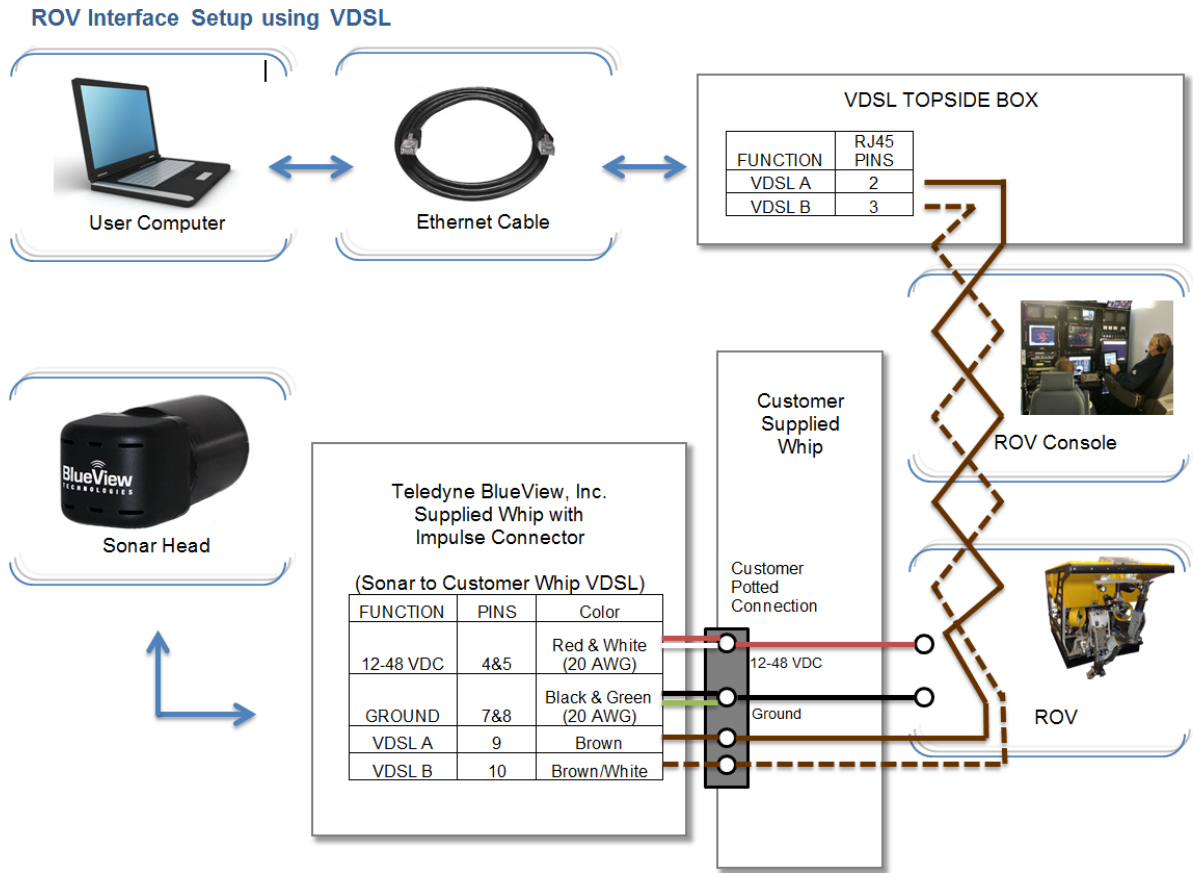
Appendix A: Non-VDSL ROV Interface Setup

ROV Interface Setup



Note: If no sonar communication, try a straight Ethernet connection. (Swap 1 & 3, 2 & 6)

Appendix B: VDSL ROV Interface Setup



Appendix C: Hardware Trigger

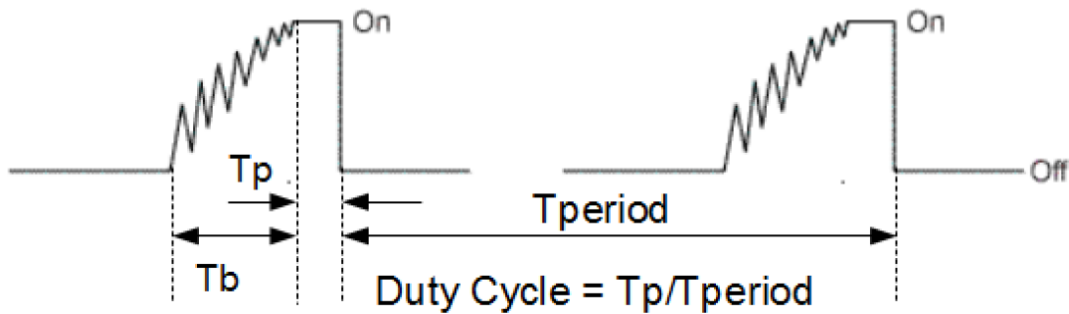
Introduction

This addendum provides the required instructions to utilize your Teledyne BlueView sonar’s hardware trigger capabilities. Wiring details are provided with reference to specific functions. To correlate these functions with particular connector points and/or wire colors, see the cable pin-out addendum for your specific unit.

➤ Utilizing the Hardware Trigger

Connect your trigger signal source to the **HW TRIG** wire and your trigger ground to the **HW TRIG GND** wire on the provided Test Cable. In general, the hardware trigger requires a 5V pulse and a 10 μs minimum pulse width on the leading edge. See the tables below for more detailed information.

Specification	Quantity
Trigger Input Type	5V TTL/CMOS
Minimum input as logic '1'	3.68 Volts
Maximum input as logic '0'	2.06 Volts
Maximum input current to drive to logic '1'	0.32 mA
Maximum input current [@ Vin = 5V]	0.53 mA



Specification	Quantity
Activate Trigger Pulse	Leading Edge
Minimum pulse width after bounce “Tp”	10 uS
Maximum bounce allowed “Tb”	< (pulse width - 10uS)
Maximum Duty cycle	1%
Maximum trigger delay after leading edge	100 mS

➤ Software Setup

- See the BlueView ProViewer or SDK manual for the procedure to enable the hardware trigger within the software.

Appendix D: GNU General Public License

GNU GENERAL PUBLIC LICENSE Version 2, June 1991

Copyright (C) 1989, 1991 Free Software Foundation, Inc.,
51 Franklin Street, Fifth Floor, Boston, MA 02110-1301 USA
Everyone is permitted to copy and distribute verbatim copies
of this license document, but changing it is not allowed.

Preamble

The licenses for most software are designed to take away your freedom to share and change it. By contrast, the GNU General Public License is intended to guarantee your freedom to share and change free software--to make sure the software is free for all its users. This General Public License applies to most of the Free Software Foundation's software and to any other program whose authors commit to using it. (Some other Free Software Foundation software is covered by the GNU Lesser General Public License instead.) You can apply it to your programs, too.

When we speak of free software, we are referring to freedom, not price. Our General Public Licenses are designed to make sure that you have the freedom to distribute copies of free software (and charge for this service if you wish), that you receive source code or can get it if you want it, that you can change the software or use pieces of it in new free programs; and that you know you can do these things.

To protect your rights, we need to make restrictions that forbid anyone to deny you these rights or to ask you to surrender the rights. These restrictions translate to certain responsibilities for you if you distribute copies of the software, or if you modify it.

For example, if you distribute copies of such a program, whether gratis or for a fee, you must give the recipients all the rights that you have. You must make sure that they, too, receive or can get the source code. And you must show them these terms so they know their rights.

We protect your rights with two steps: (1) copyright the software, and (2) offer you this license which gives you legal permission to copy, distribute and/or modify the software.

Also, for each author's protection and ours, we want to make certain that everyone understands that there is no warranty for this free software. If the software is modified by someone else and passed on, we want its recipients to know that what they have is not the original, so that any problems introduced by others will not reflect on the original authors' reputations.

Finally, any free program is threatened constantly by software patents. We wish to avoid the danger that redistributors of a free program will individually obtain patent licenses, in effect making the program proprietary. To prevent this, we have made it clear that any patent must be licensed for everyone's free use or not licensed at all.

The precise terms and conditions for copying, distribution and modification follow.

GNU GENERAL PUBLIC LICENSE
TERMS AND CONDITIONS FOR COPYING, DISTRIBUTION AND MODIFICATION

0. This License applies to any program or other work which contains a notice placed by the copyright holder saying it may be distributed under the terms of this General Public License. The "Program", below, refers to any such program or work, and a "work based on the Program" means either the Program or any derivative work under copyright law: that is to say, a work containing the Program or a portion of it, either verbatim or with modifications and/or translated into another language. (Hereinafter, translation is included without limitation in the term "modification".) Each licensee is addressed as "you".

Activities other than copying, distribution and modification are not covered by this License; they are outside its scope. The act of running the Program is not restricted, and the output from the Program is covered only if its contents constitute a work based on the Program (independent of having been made by running the Program). Whether that is true depends on what the Program does.

1. You may copy and distribute verbatim copies of the Program's source code as you receive it, in any medium, provided that you conspicuously and appropriately publish on each copy an appropriate copyright notice and disclaimer of warranty; keep intact all the notices that refer to this License and to the absence of any warranty; and give any other recipients of the Program a copy of this License along with the Program.

You may charge a fee for the physical act of transferring a copy, and you may at your option offer warranty protection in exchange for a fee.

2. You may modify your copy or copies of the Program or any portion of it, thus forming a work based on the Program, and copy and distribute such modifications or work under the terms of Section 1 above, provided that you also meet all of these conditions:

- a) You must cause the modified files to carry prominent notices stating that you changed the files and the date of any change.
- b) You must cause any work that you distribute or publish, that in whole or in part contains or is derived from the Program or any part thereof, to be licensed as a whole at no charge to all third parties under the terms of this License.
- c) If the modified program normally reads commands interactively when run, you must cause it, when started running for such interactive use in the most ordinary way, to print or display an announcement including an appropriate copyright notice and a notice that there is no warranty (or else, saying that you provide a warranty) and that users may redistribute the program under these conditions, and telling the user how to view a copy of this License. (Exception: if the Program itself is interactive but does not normally print such an announcement, your work based on the Program is not required to print an announcement.)

These requirements apply to the modified work as a whole. If

identifiable sections of that work are not derived from the Program, and can be reasonably considered independent and separate works in themselves, then this License, and its terms, do not apply to those sections when you distribute them as separate works. But when you distribute the same sections as part of a whole which is a work based on the Program, the distribution of the whole must be on the terms of this License, whose permissions for other licensees extend to the entire whole, and thus to each and every part regardless of who wrote it.

Thus, it is not the intent of this section to claim rights or contest your rights to work written entirely by you; rather, the intent is to exercise the right to control the distribution of derivative or collective works based on the Program.

In addition, mere aggregation of another work not based on the Program with the Program (or with a work based on the Program) on a volume of a storage or distribution medium does not bring the other work under the scope of this License.

3. You may copy and distribute the Program (or a work based on it, under Section 2) in object code or executable form under the terms of Sections 1 and 2 above provided that you also do one of the following:

- a) Accompany it with the complete corresponding machine-readable source code, which must be distributed under the terms of Sections 1 and 2 above on a medium customarily used for software interchange; or,
- b) Accompany it with a written offer, valid for at least three years, to give any third party, for a charge no more than your cost of physically performing source distribution, a complete machine-readable copy of the corresponding source code, to be distributed under the terms of Sections 1 and 2 above on a medium customarily used for software interchange; or,
- c) Accompany it with the information you received as to the offer to distribute corresponding source code. (This alternative is allowed only for noncommercial distribution and only if you received the program in object code or executable form with such an offer, in accord with Subsection b above.)

The source code for a work means the preferred form of the work for making modifications to it. For an executable work, complete source code means all the source code for all modules it contains, plus any associated interface definition files, plus the scripts used to control compilation and installation of the executable. However, as a special exception, the source code distributed need not include anything that is normally distributed (in either source or binary form) with the major components (compiler, kernel, and so on) of the operating system on which the executable runs, unless that component itself accompanies the executable.

If distribution of executable or object code is made by offering access to copy from a designated place, then offering equivalent access to copy the source code from the same place counts as distribution of the source code, even though third parties are not compelled to copy the source along with the object code.

4. You may not copy, modify, sublicense, or distribute the Program except as expressly provided under this License. Any attempt

otherwise to copy, modify, sublicense or distribute the Program is void, and will automatically terminate your rights under this License. However, parties who have received copies, or rights, from you under this License will not have their licenses terminated so long as such parties remain in full compliance.

5. You are not required to accept this License, since you have not signed it. However, nothing else grants you permission to modify or distribute the Program or its derivative works. These actions are prohibited by law if you do not accept this License. Therefore, by modifying or distributing the Program (or any work based on the Program), you indicate your acceptance of this License to do so, and all its terms and conditions for copying, distributing or modifying the Program or works based on it.

6. Each time you redistribute the Program (or any work based on the Program), the recipient automatically receives a license from the original licensor to copy, distribute or modify the Program subject to these terms and conditions. You may not impose any further restrictions on the recipients' exercise of the rights granted herein. You are not responsible for enforcing compliance by third parties to this License.

7. If, as a consequence of a court judgment or allegation of patent infringement or for any other reason (not limited to patent issues), conditions are imposed on you (whether by court order, agreement or otherwise) that contradict the conditions of this License, they do not excuse you from the conditions of this License. If you cannot distribute so as to satisfy simultaneously your obligations under this License and any other pertinent obligations, then as a consequence you may not distribute the Program at all. For example, if a patent license would not permit royalty-free redistribution of the Program by all those who receive copies directly or indirectly through you, then the only way you could satisfy both it and this License would be to refrain entirely from distribution of the Program.

If any portion of this section is held invalid or unenforceable under any particular circumstance, the balance of the section is intended to apply and the section as a whole is intended to apply in other circumstances.

It is not the purpose of this section to induce you to infringe any patents or other property right claims or to contest validity of any such claims; this section has the sole purpose of protecting the integrity of the free software distribution system, which is implemented by public license practices. Many people have made generous contributions to the wide range of software distributed through that system in reliance on consistent application of that system; it is up to the author/donor to decide if he or she is willing to distribute software through any other system and a licensee cannot impose that choice.

This section is intended to make thoroughly clear what is believed to be a consequence of the rest of this License.

8. If the distribution and/or use of the Program is restricted in certain countries either by patents or by copyrighted interfaces, the original copyright holder who places the Program under this License may add an explicit geographical distribution limitation excluding

those countries, so that distribution is permitted only in or among countries not thus excluded. In such case, this License incorporates the limitation as if written in the body of this License.

9. The Free Software Foundation may publish revised and/or new versions of the General Public License from time to time. Such new versions will be similar in spirit to the present version, but may differ in detail to address new problems or concerns.

Each version is given a distinguishing version number. If the Program specifies a version number of this License which applies to it and "any later version", you have the option of following the terms and conditions either of that version or of any later version published by the Free Software Foundation. If the Program does not specify a version number of this License, you may choose any version ever published by the Free Software Foundation.

10. If you wish to incorporate parts of the Program into other free programs whose distribution conditions are different, write to the author to ask for permission. For software which is copyrighted by the Free Software Foundation, write to the Free Software Foundation; we sometimes make exceptions for this. Our decision will be guided by the two goals of preserving the free status of all derivatives of our free software and of promoting the sharing and reuse of software generally.

NO WARRANTY

11. BECAUSE THE PROGRAM IS LICENSED FREE OF CHARGE, THERE IS NO WARRANTY FOR THE PROGRAM, TO THE EXTENT PERMITTED BY APPLICABLE LAW. EXCEPT WHEN OTHERWISE STATED IN WRITING THE COPYRIGHT HOLDERS AND/OR OTHER PARTIES PROVIDE THE PROGRAM "AS IS" WITHOUT WARRANTY OF ANY KIND, EITHER EXPRESSED OR IMPLIED, INCLUDING, BUT NOT LIMITED TO, THE IMPLIED WARRANTIES OF MERCHANTABILITY AND FITNESS FOR A PARTICULAR PURPOSE. THE ENTIRE RISK AS TO THE QUALITY AND PERFORMANCE OF THE PROGRAM IS WITH YOU. SHOULD THE PROGRAM PROVE DEFECTIVE, YOU ASSUME THE COST OF ALL NECESSARY SERVICING, REPAIR OR CORRECTION.

12. IN NO EVENT UNLESS REQUIRED BY APPLICABLE LAW OR AGREED TO IN WRITING WILL ANY COPYRIGHT HOLDER, OR ANY OTHER PARTY WHO MAY MODIFY AND/OR REDISTRIBUTE THE PROGRAM AS PERMITTED ABOVE, BE LIABLE TO YOU FOR DAMAGES, INCLUDING ANY GENERAL, SPECIAL, INCIDENTAL OR CONSEQUENTIAL DAMAGES ARISING OUT OF THE USE OR INABILITY TO USE THE PROGRAM (INCLUDING BUT NOT LIMITED TO LOSS OF DATA OR DATA BEING RENDERED INACCURATE OR LOSSES SUSTAINED BY YOU OR THIRD PARTIES OR A FAILURE OF THE PROGRAM TO OPERATE WITH ANY OTHER PROGRAMS), EVEN IF SUCH HOLDER OR OTHER PARTY HAS BEEN ADVISED OF THE POSSIBILITY OF SUCH DAMAGES.

END OF TERMS AND CONDITIONS

How to Apply These Terms to Your New Programs

If you develop a new program, and you want it to be of the greatest possible use to the public, the best way to achieve this is to make it free software which everyone can redistribute and change under these terms.

To do so, attach the following notices to the program. It is safest to attach them to the start of each source file to most effectively convey the exclusion of warranty; and each file should have at least the "copyright" line and a pointer to where the full notice is found.

<one line to give the program's name and a brief idea of what it does.>
Copyright (C) <year> <name of author>

This program is free software; you can redistribute it and/or modify it under the terms of the GNU General Public License as published by the Free Software Foundation; either version 2 of the License, or (at your option) any later version.

This program is distributed in the hope that it will be useful, but WITHOUT ANY WARRANTY; without even the implied warranty of MERCHANTABILITY or FITNESS FOR A PARTICULAR PURPOSE. See the GNU General Public License for more details.

You should have received a copy of the GNU General Public License along with this program; if not, write to the Free Software Foundation, Inc., 51 Franklin Street, Fifth Floor, Boston, MA 02110-1301 USA.

Also add information on how to contact you by electronic and paper mail.

If the program is interactive, make it output a short notice like this when it starts in an interactive mode:

```
Gnomovision version 69, Copyright (C) year name of author
Gnomovision comes with ABSOLUTELY NO WARRANTY; for details type `show w'.
This is free software, and you are welcome to redistribute it
under certain conditions; type `show c' for details.
```

The hypothetical commands `show w' and `show c' should show the appropriate parts of the General Public License. Of course, the commands you use may be called something other than `show w' and `show c'; they could even be mouse-clicks or menu items--whatever suits your program.

You should also get your employer (if you work as a programmer) or your school, if any, to sign a "copyright disclaimer" for the program, if necessary. Here is a sample; alter the names:

```
Yoyodyne, Inc., hereby disclaims all copyright interest in the program
`Gnomovision' (which makes passes at compilers) written by James Hacker.
```

```
<signature of Ty Coon>, 1 April 1989
Ty Coon, President of Vice
```

This General Public License does not permit incorporating your program into proprietary programs. If your program is a subroutine library, you may consider it more useful to permit linking proprietary applications with the library. If this is what you want to do, use the GNU Lesser General Public License instead of this License.